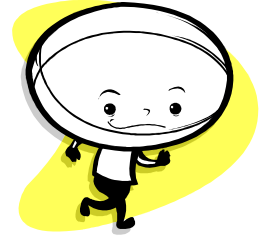




HURLY BURLY



Equipment: Small football
Team bands (bibs)
4 cones (shoes, t-shirts or anything to make a boundary)

Preparation Place cone 2 meters apart to act as goals either side of playing area 20-40 meters long.

Teams spread out in own half of playing area.

- Passing is by throwing ball.
- Goals are scored by ball being thrown into opposing goal.
- Tackles made by touching player holding ball.
- Player touched must drop ball and cannot throw or pass the ball after being touched.

